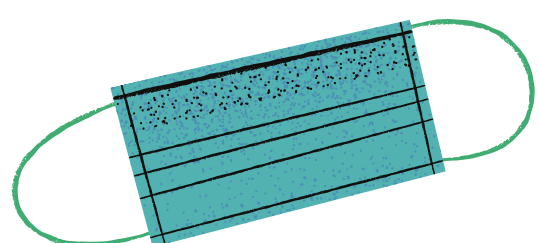


YAY

WELCOME BACK TO THE CENTRAL SCOTLAND SCHOOL OF JEWELLERY!

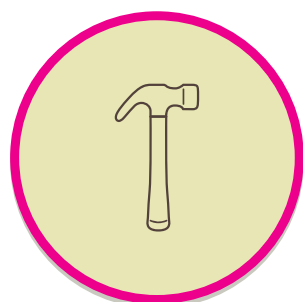
Practice good hygiene



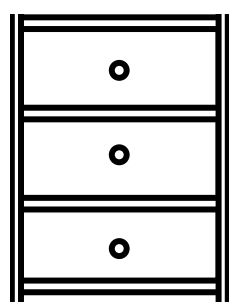
You are required to wear your mask at all times when you are in the studio (unless you are exempt).



Sanitise your hand on entry to the studio and proceed directly to your bench.



There will be a selection of tools laid out at your bench for you to use and they have been sanitised for you. Please do not share tools.



Communal Tools - please sanitise your hands before using communal tools.



Please tidy up when instructed and follow staff guidance for wiping down your bench.

Social Distancing

- Please do not arrive early for class as you will not be allowed to enter the studio.
- Please keep any personal possessions (coats/bags) in the bench cupboards for the duration of the class.
- Please remain aware of your surroundings and maintain 2m social distancing
- A one way system is in place for retrieving tools - please follow the floor arrows
- The kitchen area is currently off-limits apart from students using the toilet.

Stay home if...

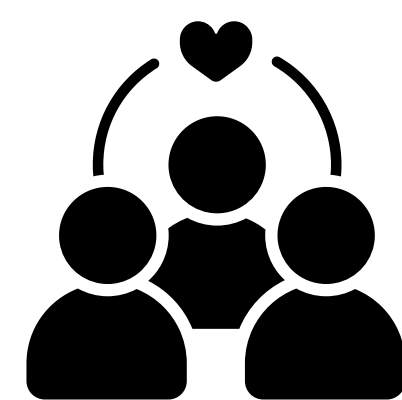
- You are **feeling unwell**
- You have an **unwell family member** at home



Let us know if...

- You start **feeling unwell during a class**
- You **develop any Covid-19 symptoms** after attending a class

Take care of your emotional and mental well-being



We understand that this can be a stressful and anxious time for folk. We're all doing the best we can and we are here to support you! If you have any questions or are unsure of anything, just ask!

 **Lastly, remember...alcohol hand gel + gas torches = bad!**